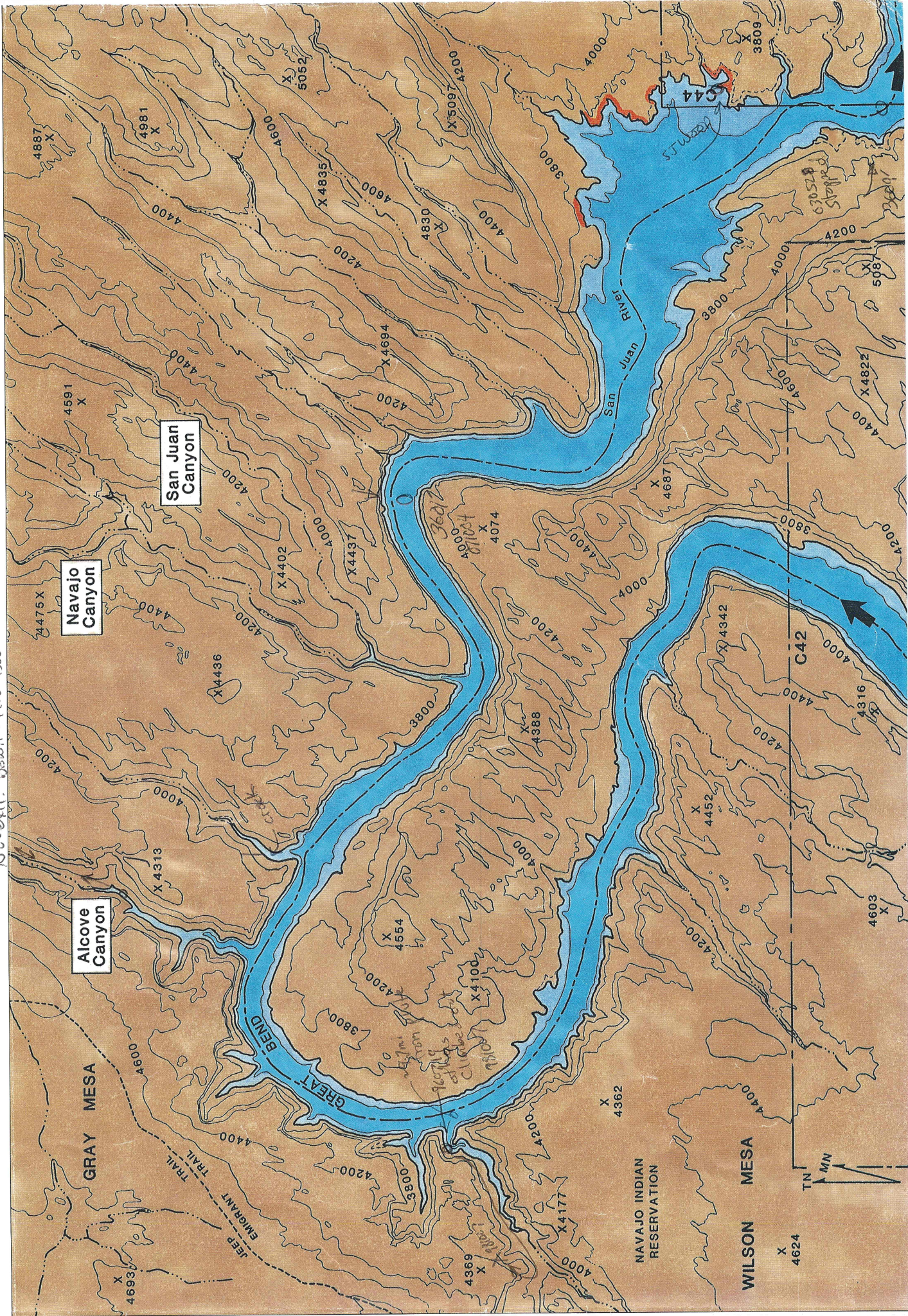
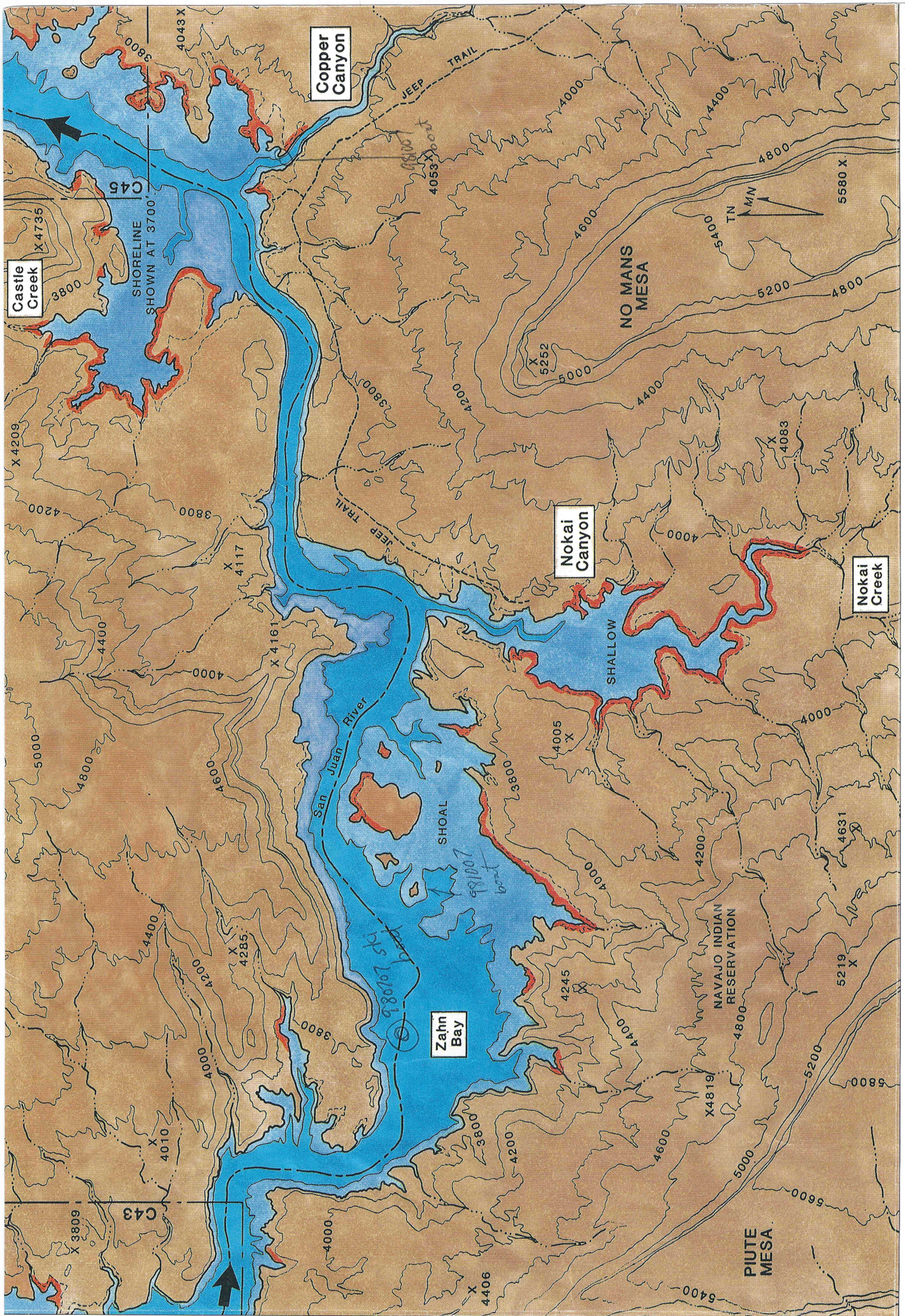


9607A 1245-1345 hiked/bushwhacked to  
 view back-sandy butte, up/down, hot!  
 No exit. Desult. at 400-1500



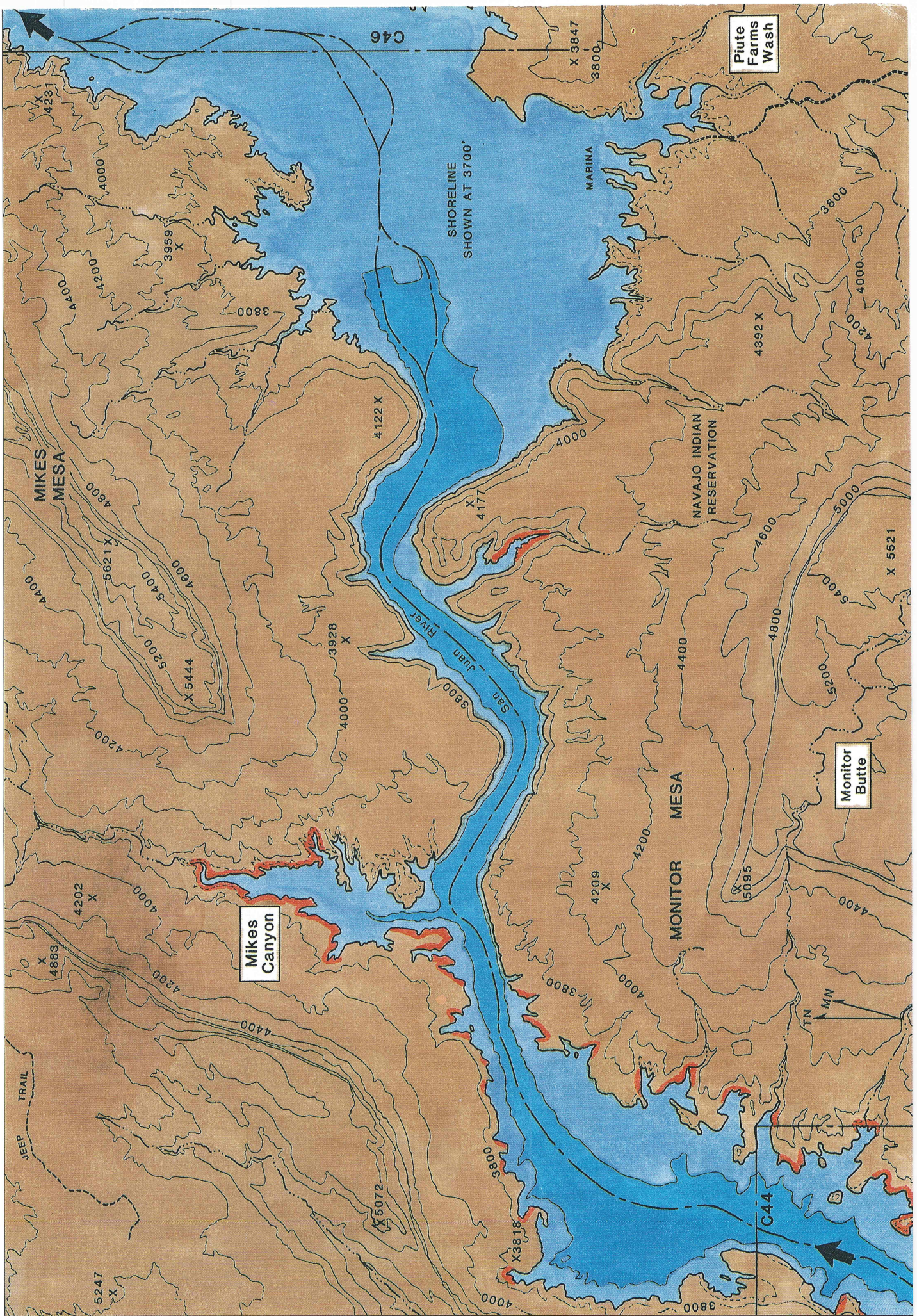




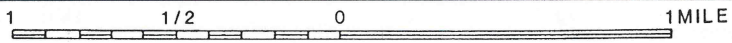
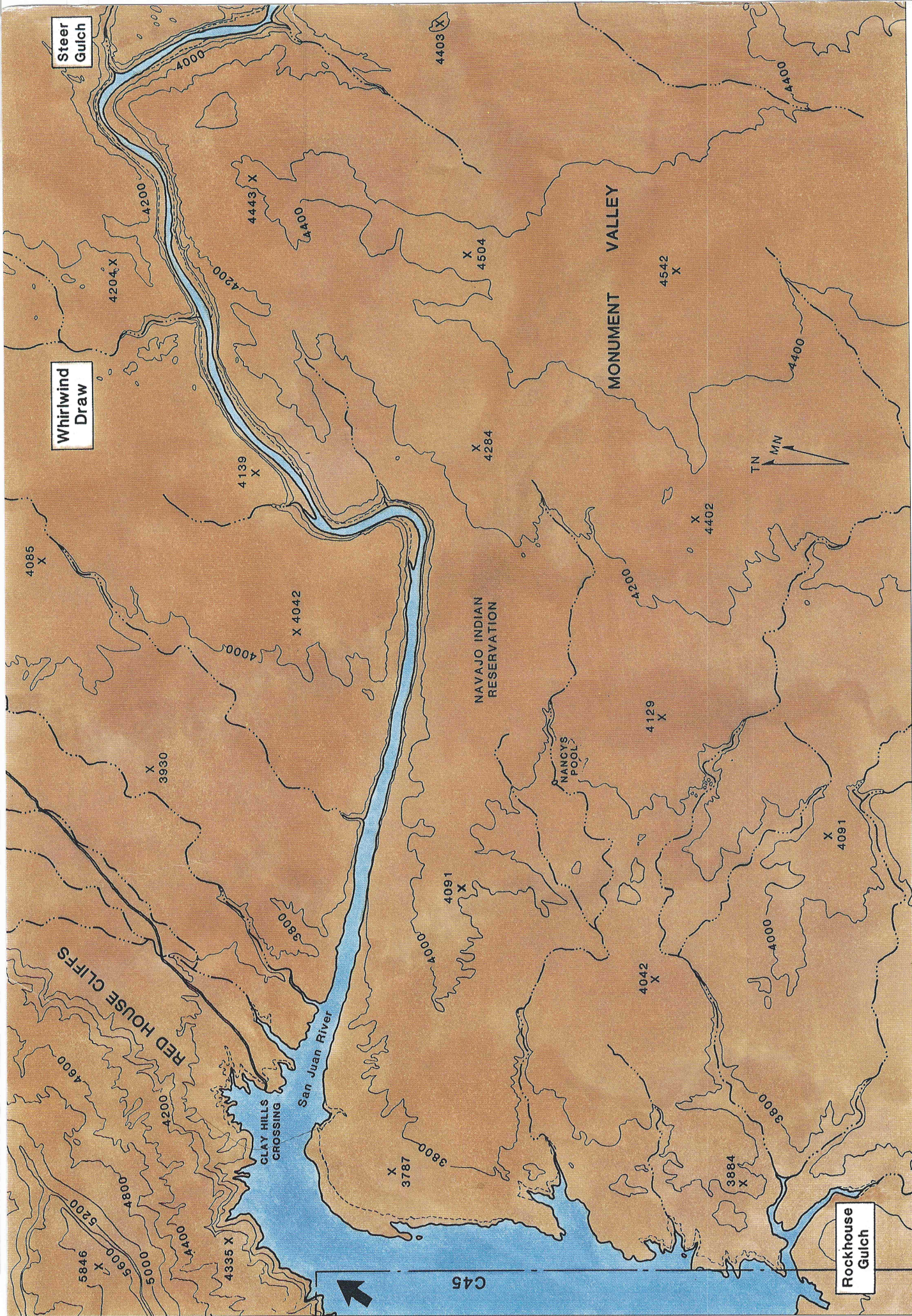
C44 San Juan River #5











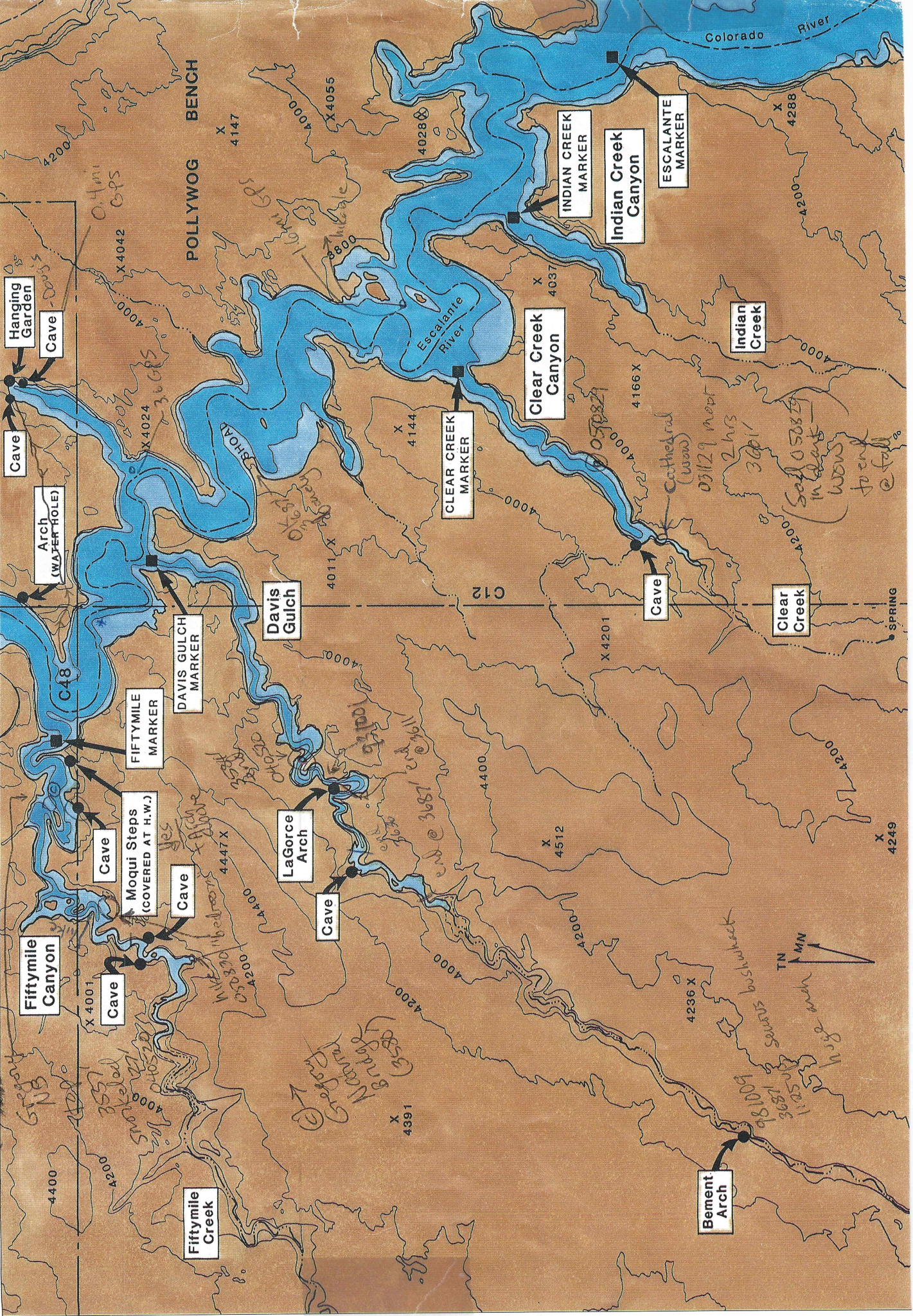


Main cave 950714  
98294

2' deep spot @ 3636' (w/ow) - top of pinnacle  
Left cave 940826, 008820

92029 + 090121  
Sand beach in front

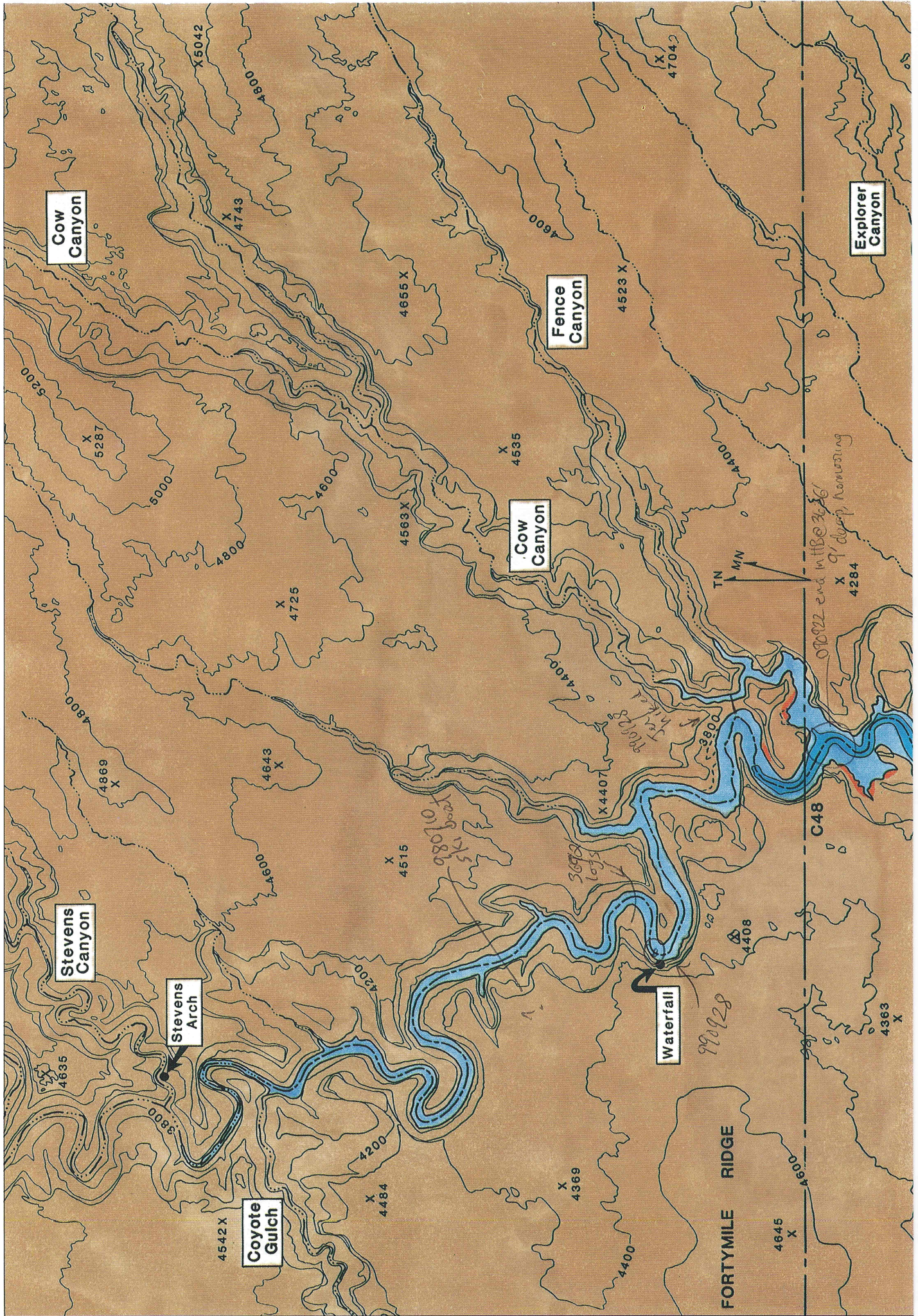
93001 - 2000' red  
La Gorce arch











Cow Canyon

Explorer Canyon

Fence Canyon

Cow Canyon

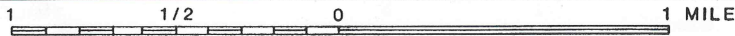
Stevens Canyon

Stevens Arch

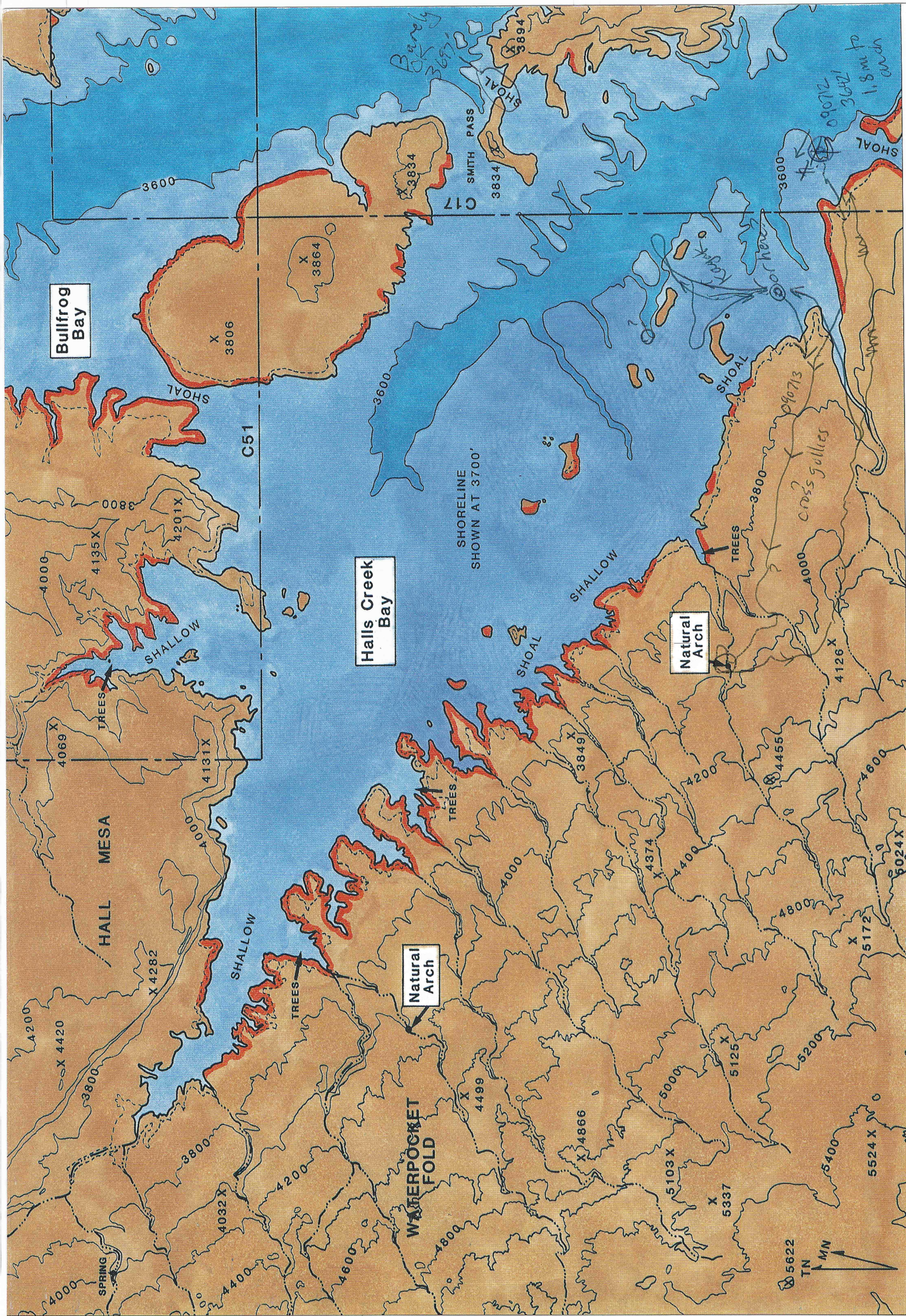
Waterfall

Coyote Gulch

FORTYMILE RIDGE

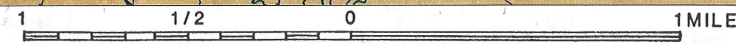




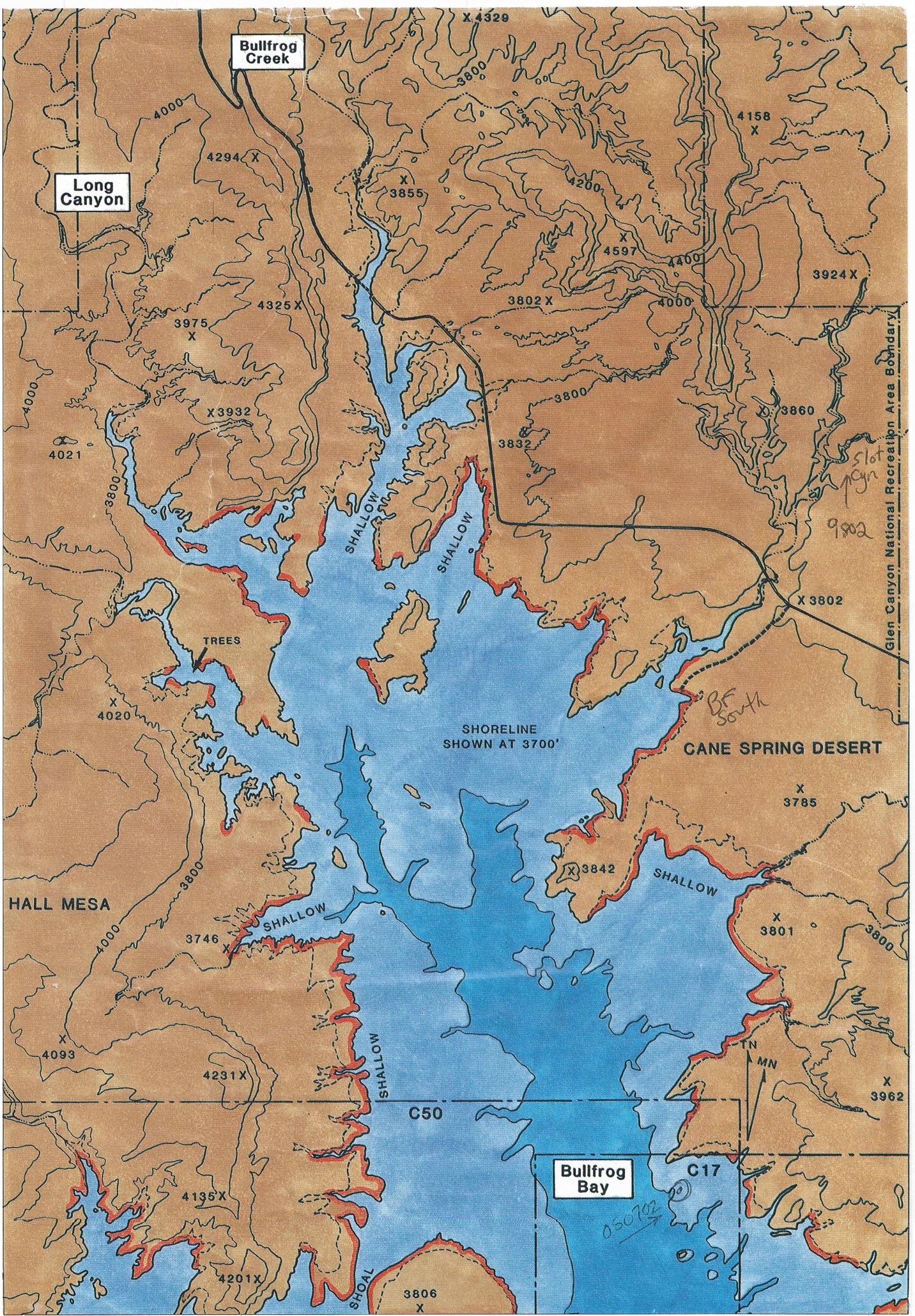


9106157

C50 Halls Creek Bay







1 1/2 0 1 MILE

Bullfrog Bay C51



