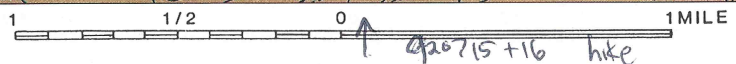
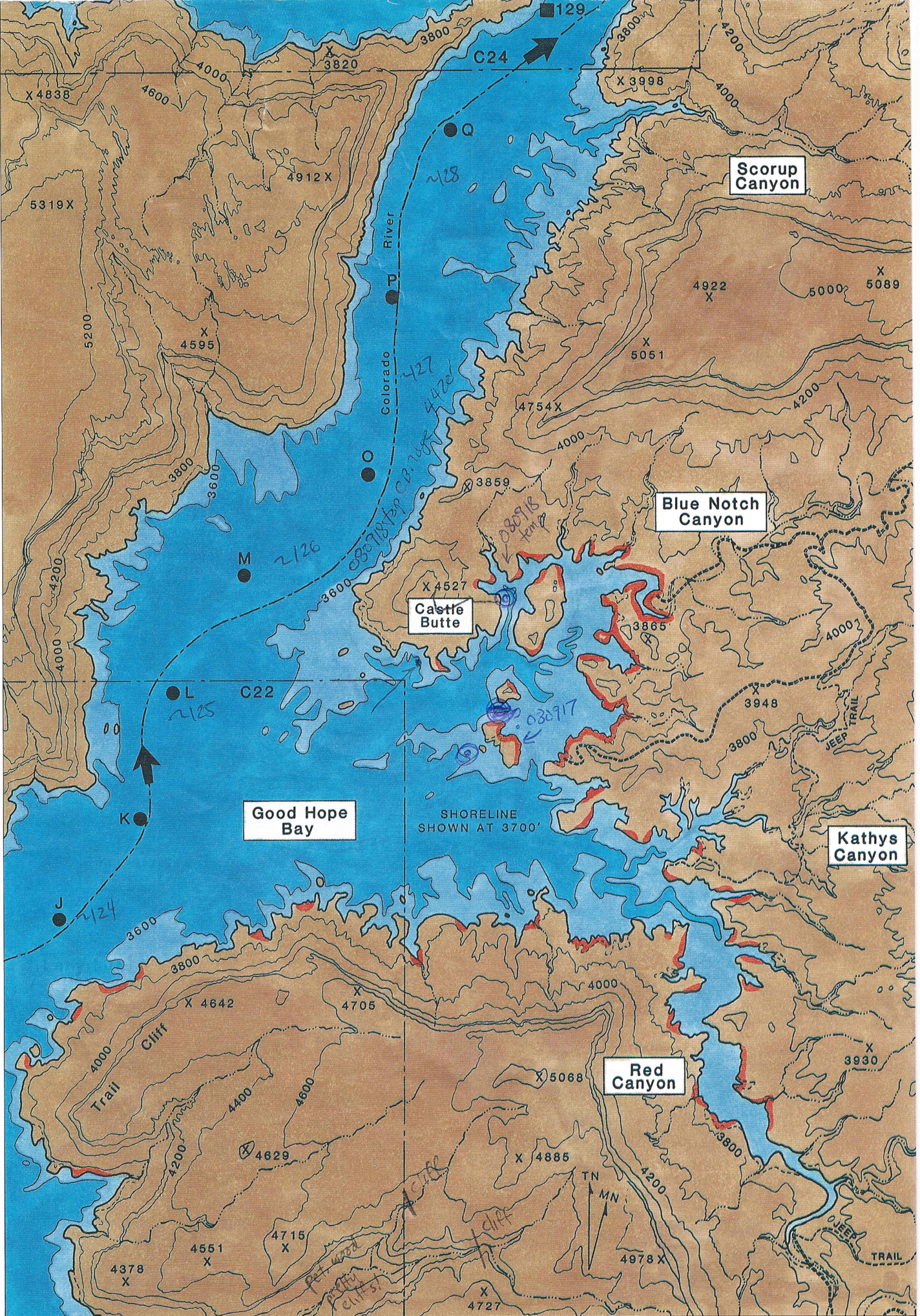
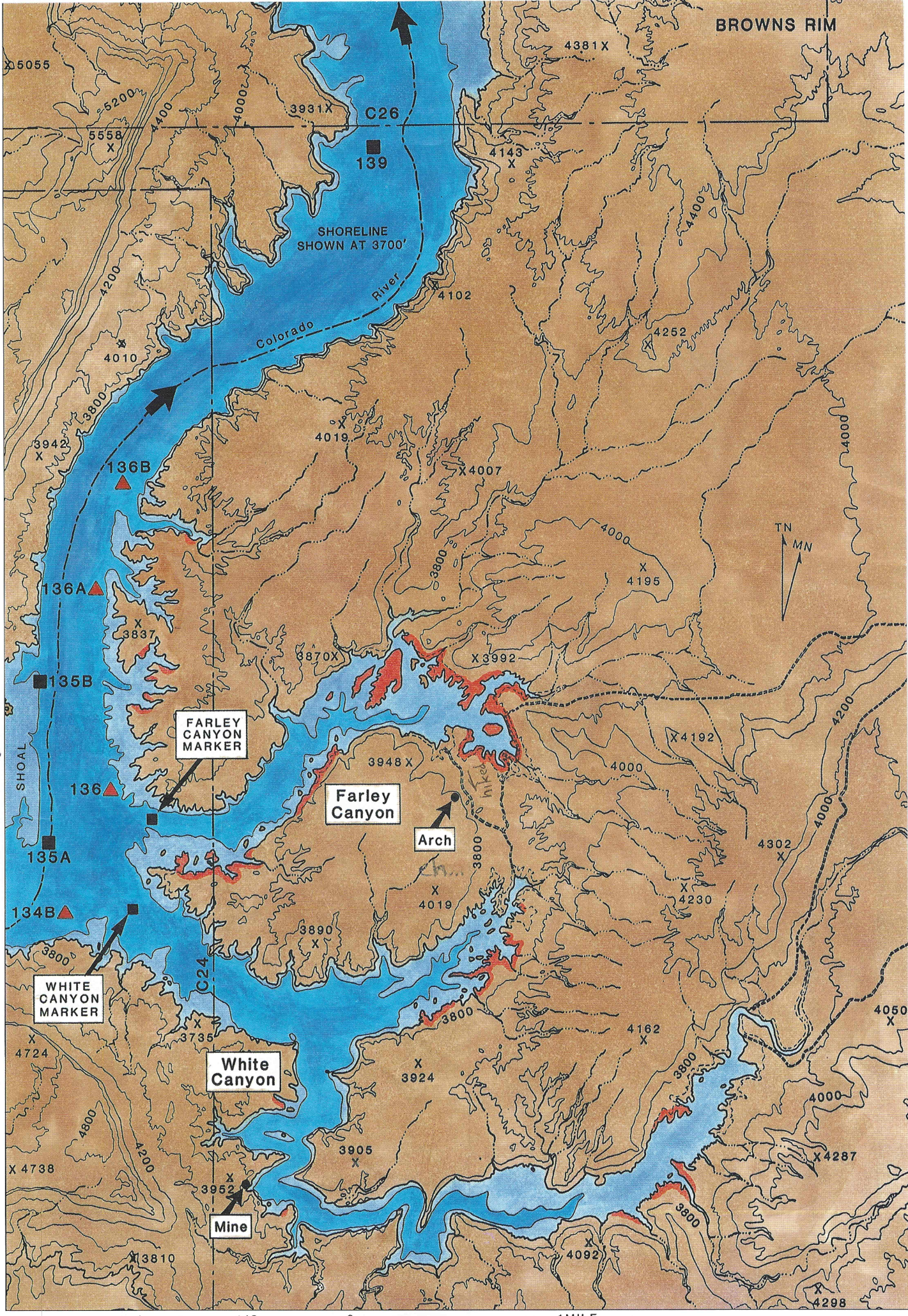


91024 →





BROWNS RIM

C26

3931X

4381X

X5055

5558 X

139

4143 X

SHORELINE SHOWN AT 3700'

Colorado River

4102

4252

4010

136B

4019

X4007

136A

X3837

3870X

X3992

135B

FARLEY CANYON MARKER

Farley Canyon

Arch

136

3948 X

X4192

135A

134B

X4019

X4230

WHITE CANYON MARKER

White Canyon

X3890

4302 X

X4724

X3735

X3924

4162 X

4050 X

X4738

X3952

X3905

X4287

Mine

X4092

3800

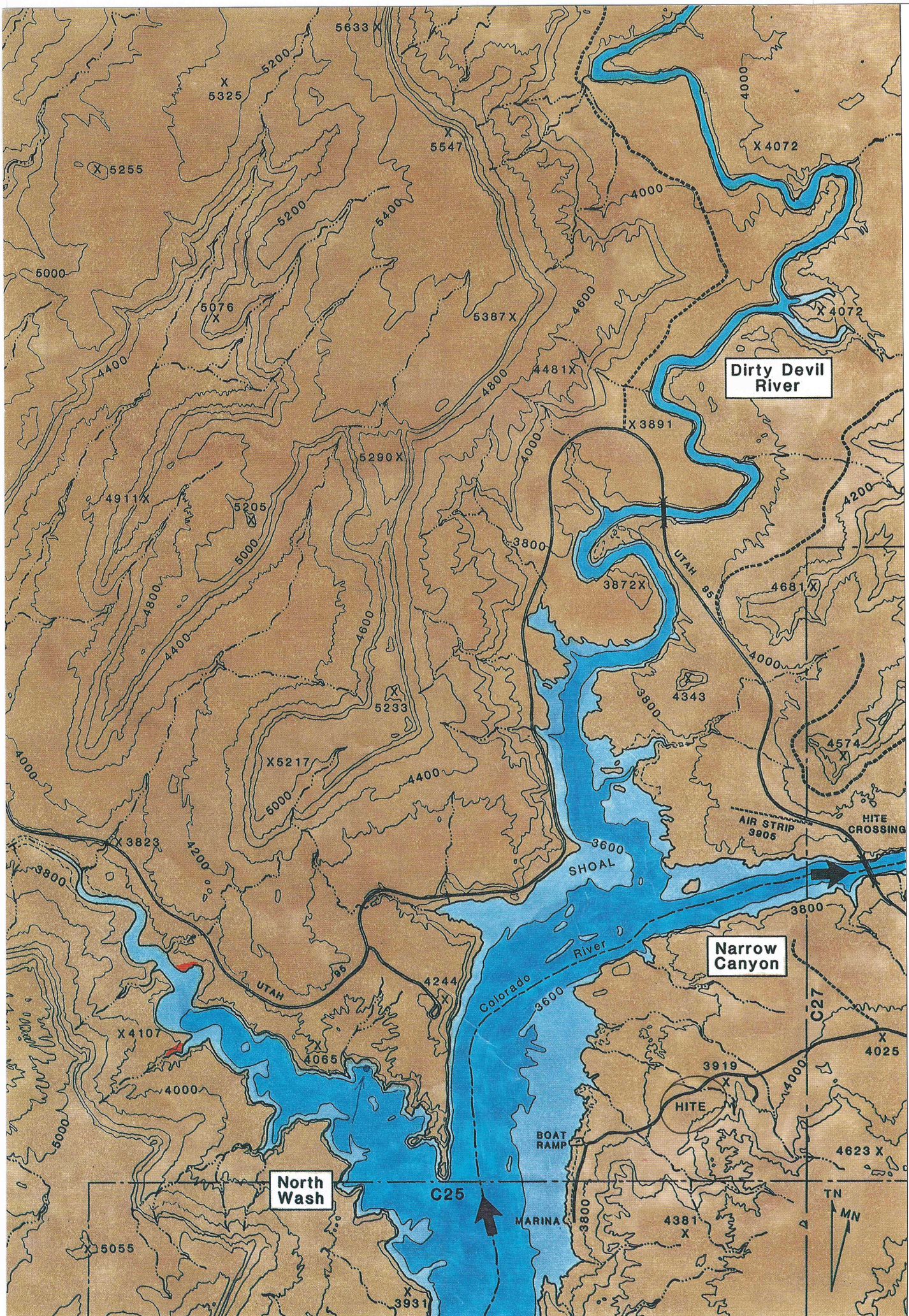
X3810

X4298



White Canyon C25

910926 hike



ski boat, 0009a7



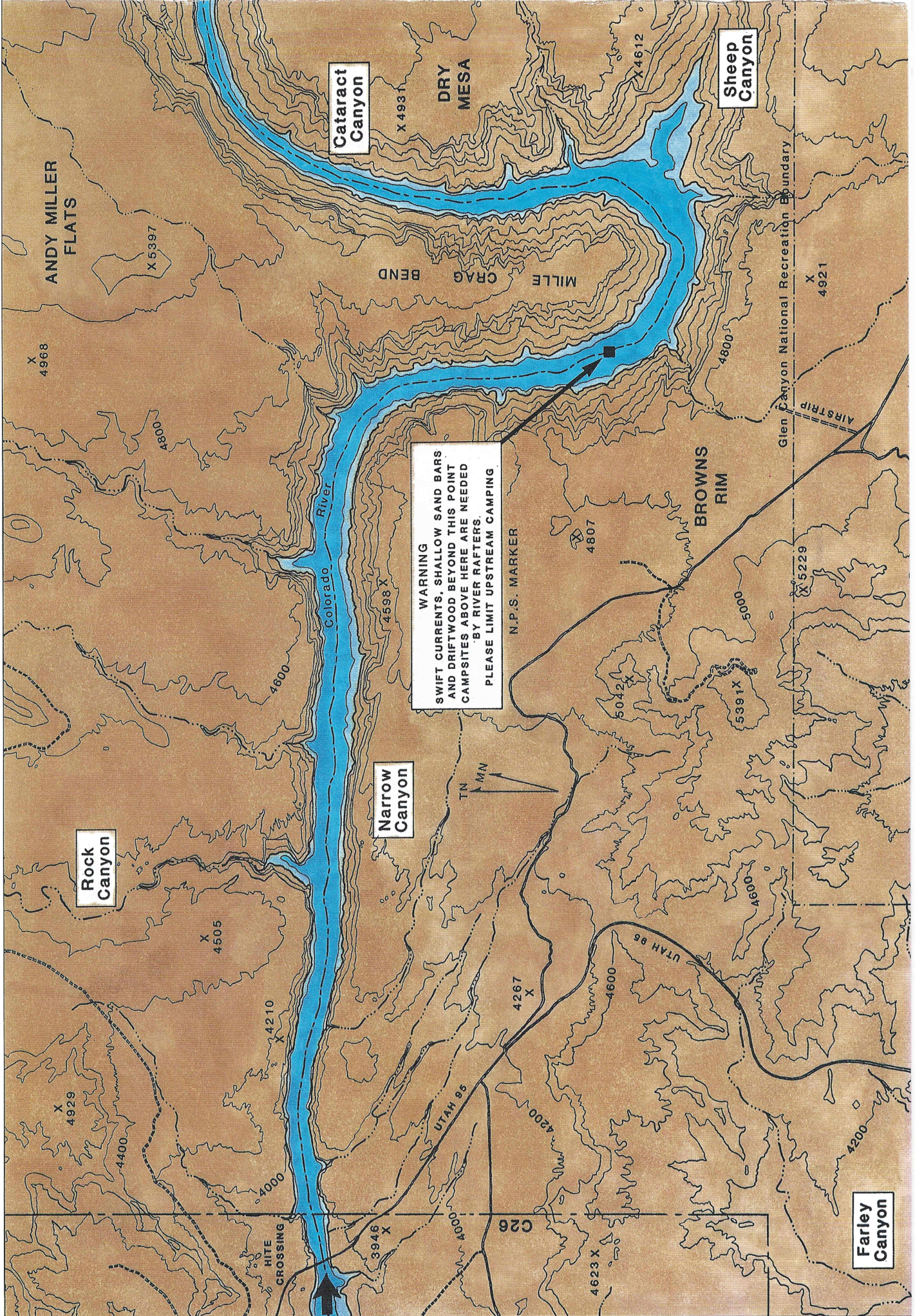
910925



C26

Hite





Cataract Canyon

Sheep Canyon

ANDY MILLER FLATS

WARNING
 SWIFT CURRENTS, SHALLOW SAND BARS
 AND DRIFTWOOD BEYOND THIS POINT
 CAMPSITES ABOVE HERE ARE NEEDED
 BY RIVER RAFTERS.
 PLEASE LIMIT UPSTREAM CAMPING

Narrow Canyon

Rock Canyon



Glen Canyon National Recreation Boundary

AIRSTRIPE

N.P.S. MARKER

TN

MN

HITE CROSSING

C26

Farley Canyon

MILLE CRAG BEND

BROWNS RIM

Colorado River

UTAH 95

UTAH 89

UTAH 95

UTAH 95

UTAH 95

UTAH 95

UTAH 95

4598 X

4600

4600

4600

4600

4600

4600

4600

4600

4600

4600

4600

4600

4600

4600

4600

4600

4600

4600

4600

4600

4600

4600

4600

4600

X 4968

X 5397

X 4931

X 4612

X 4921

X 5229

4807

5042 X

5391 X

X 4505

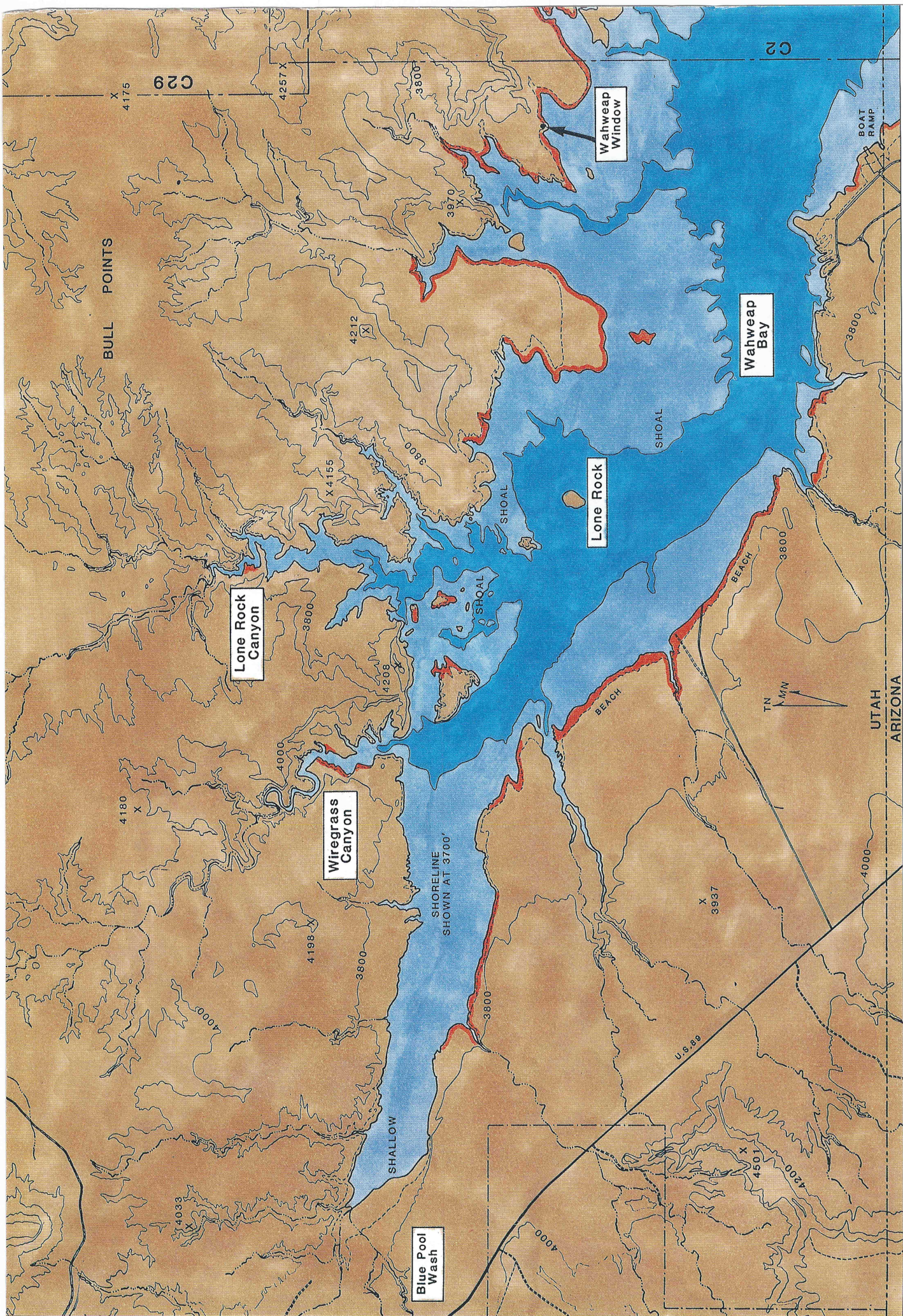
X 4929

X 4210

X 4267

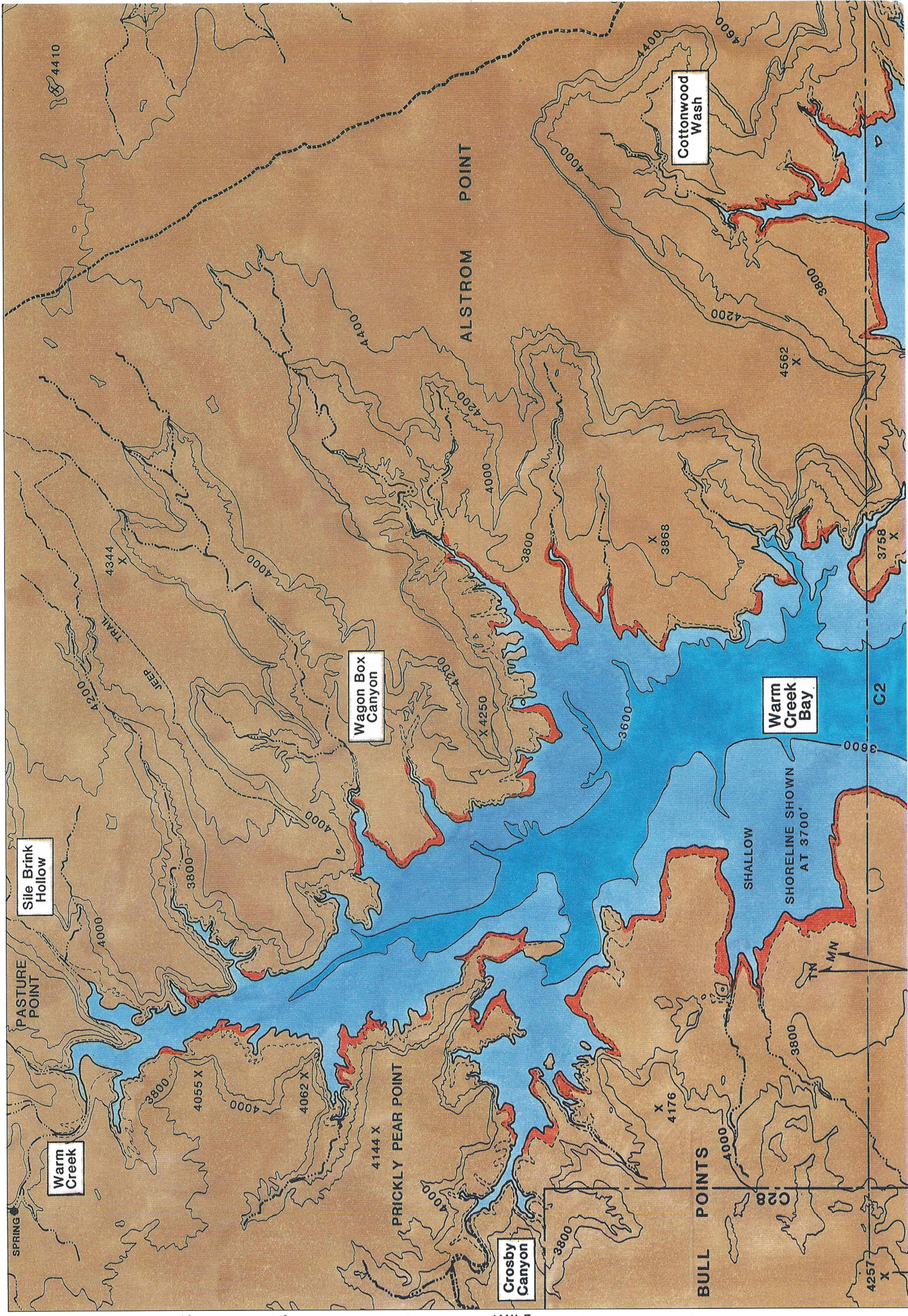
X 3946

X 4623



C28 Wahweap Bay

1 1/2 0 1 MILE



Sile Brink Hollow

Warm Creek

Wagon Box Canyon

ALSTROM POINT

Cottonwood Wash

Warm Creek Bay

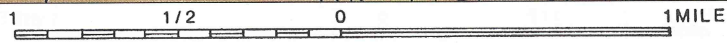
PASTURE POINT

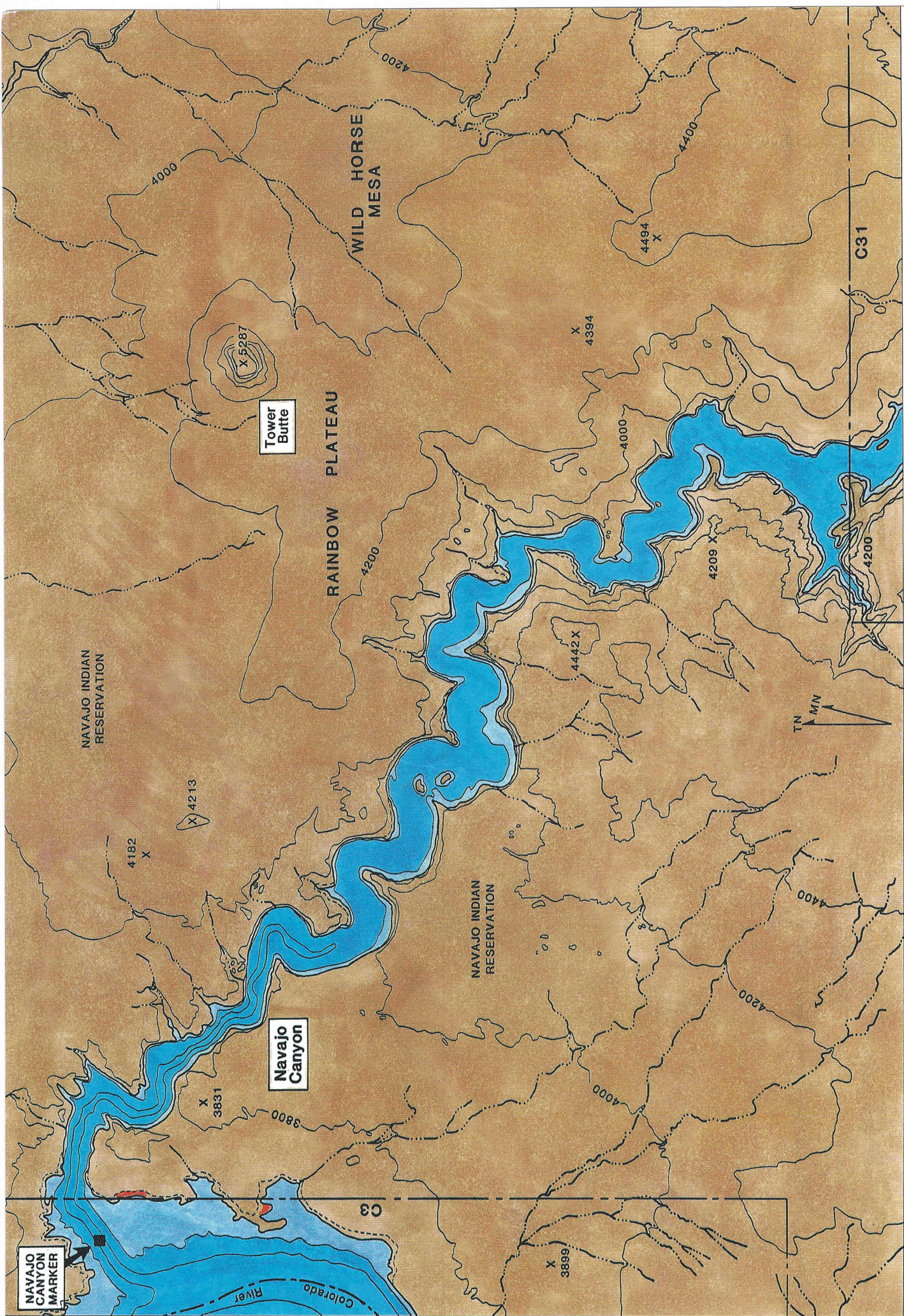
PRICKLY PEAR POINT

Crosby Canyon

BULL POINTS

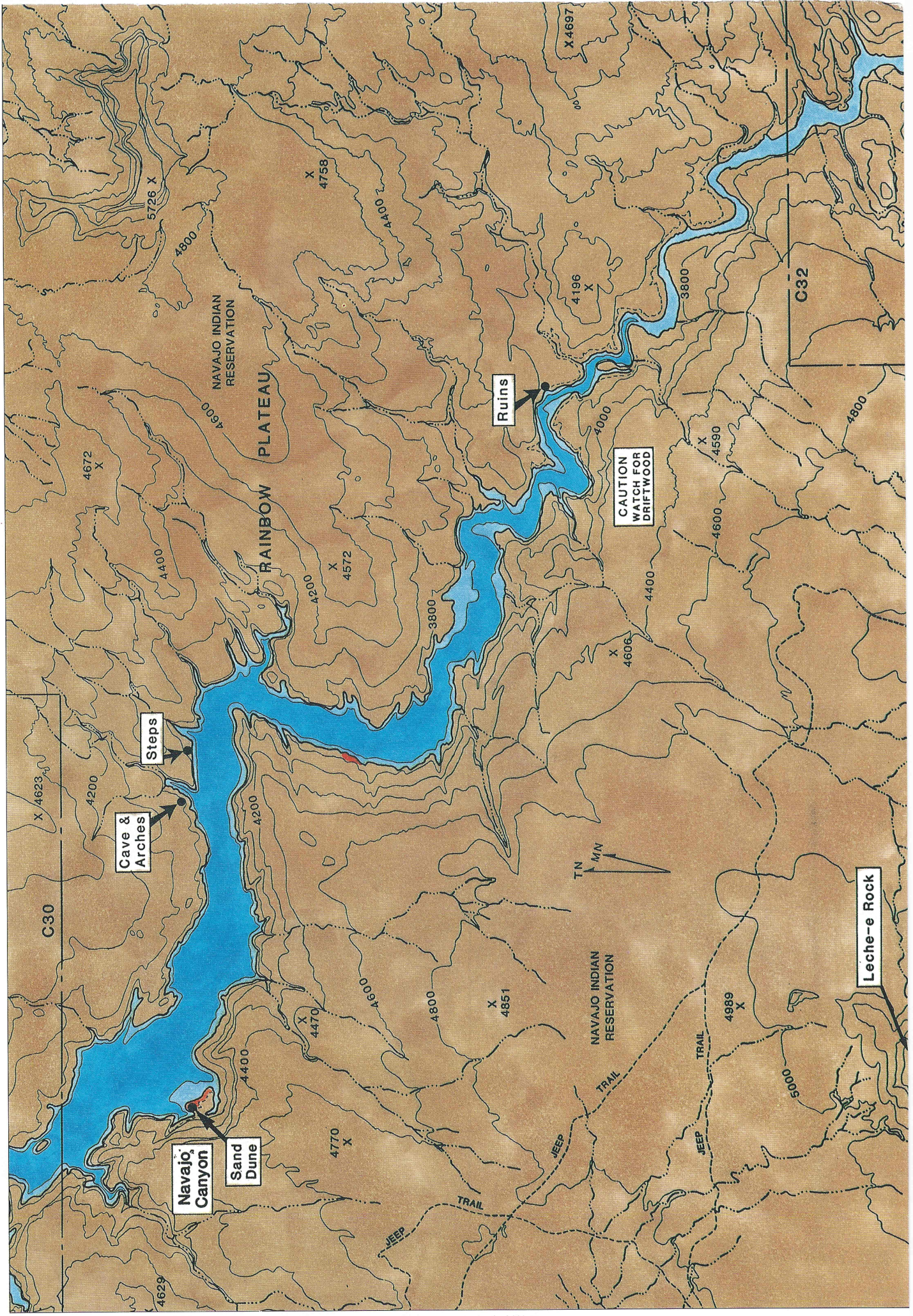
SHALLOW SHORELINE SHOWN AT 3700'



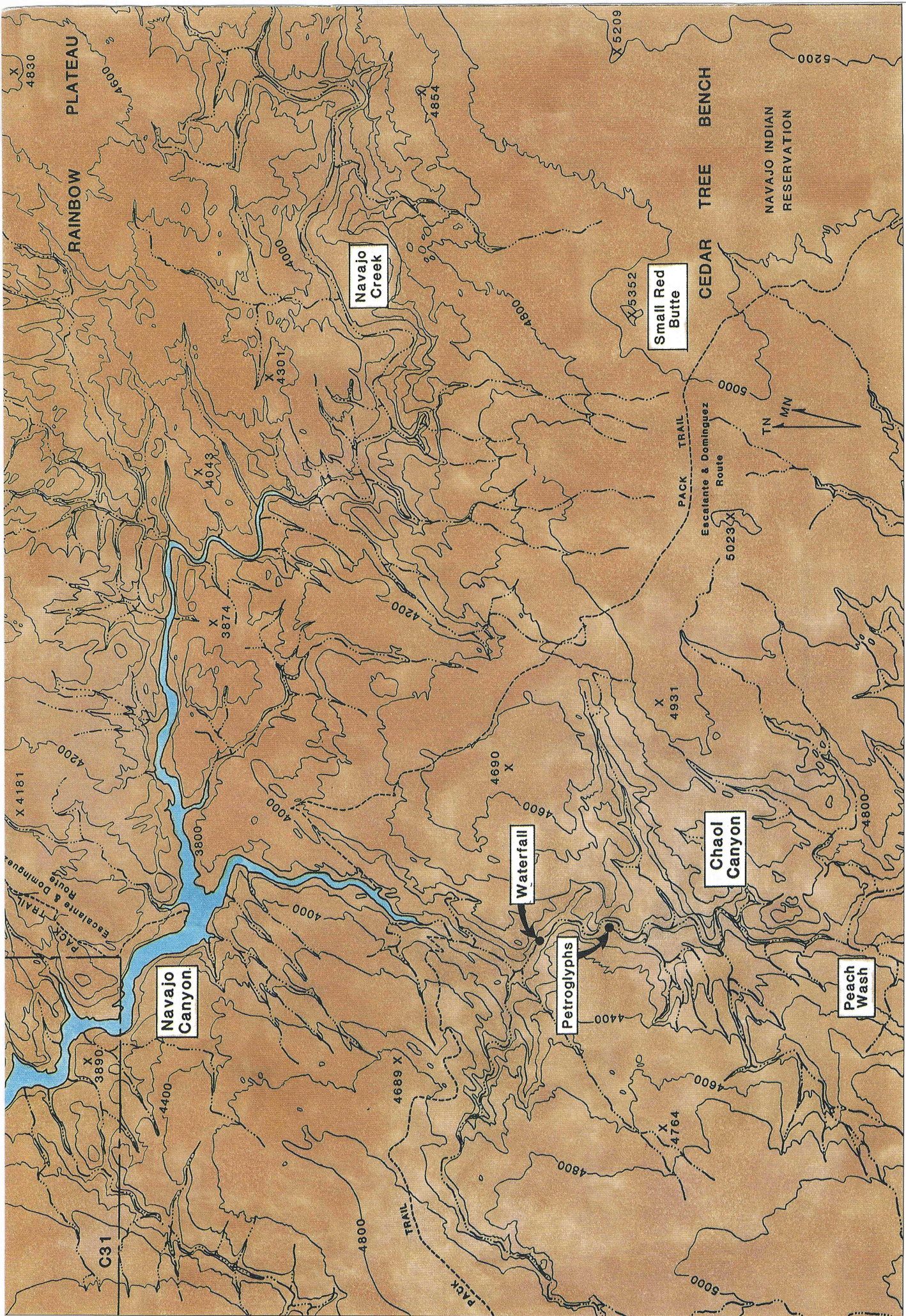


C30 Navajo Canyon #1

1 1/2 0 1 MILE



1 1/2 0 1 MILE



C32 Navajo Canyon #3

