

Padre Bay

Last Chance Bay

Padre Butte

Gregory Butte

Gooseneck Point

22 LITE

23 LITE

Dominguez Butte

DINOSAUR ROCK

Face Canyon

Boundary Butte

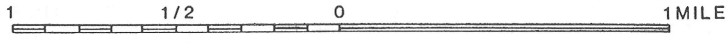
MESA

Labyrinth Bay

NAVAJO INDIAN RESERVATION

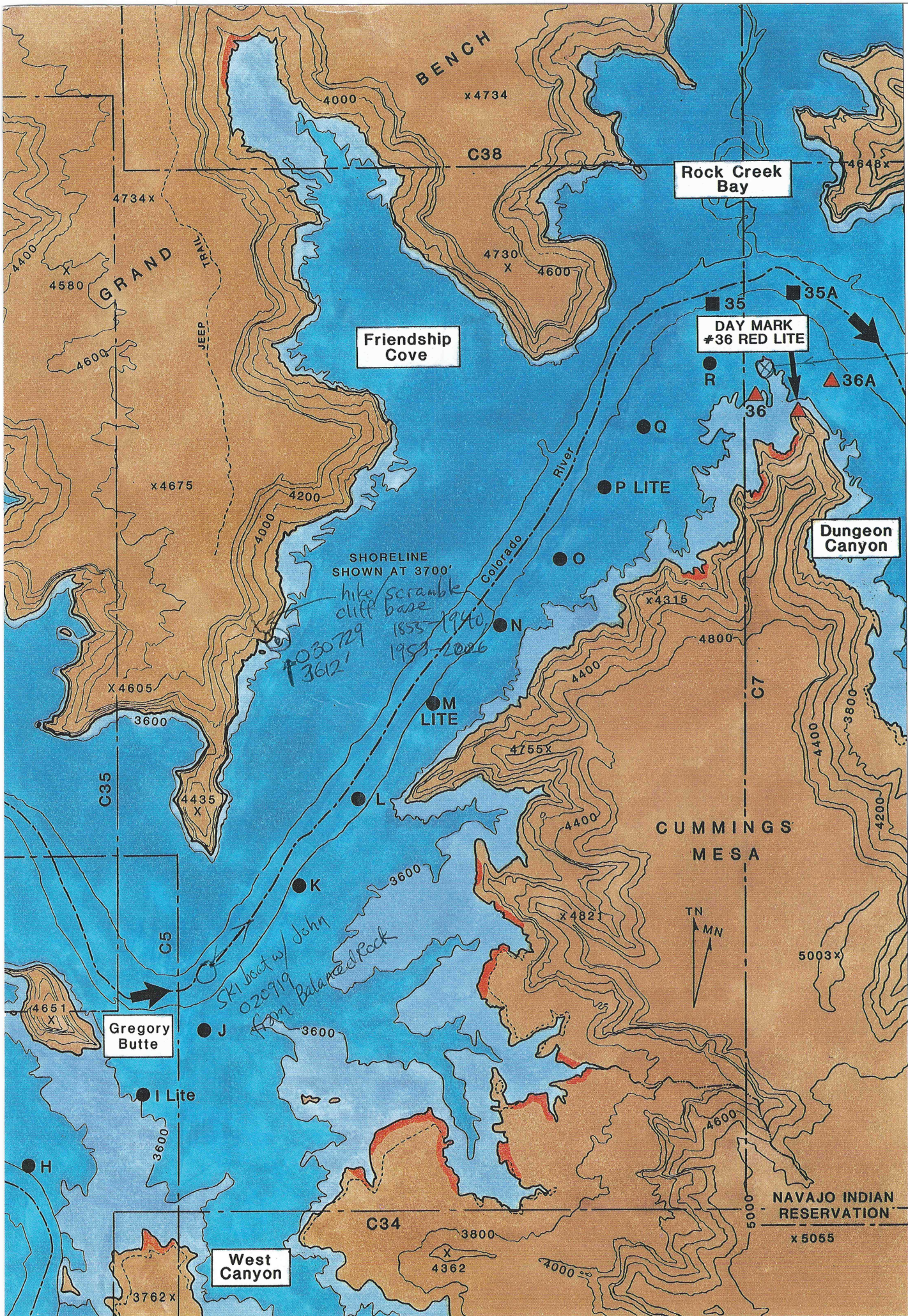
UTAH ARIZONA

CUMMINGS



Face Canyon

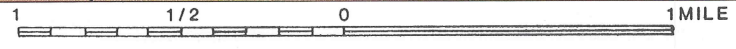
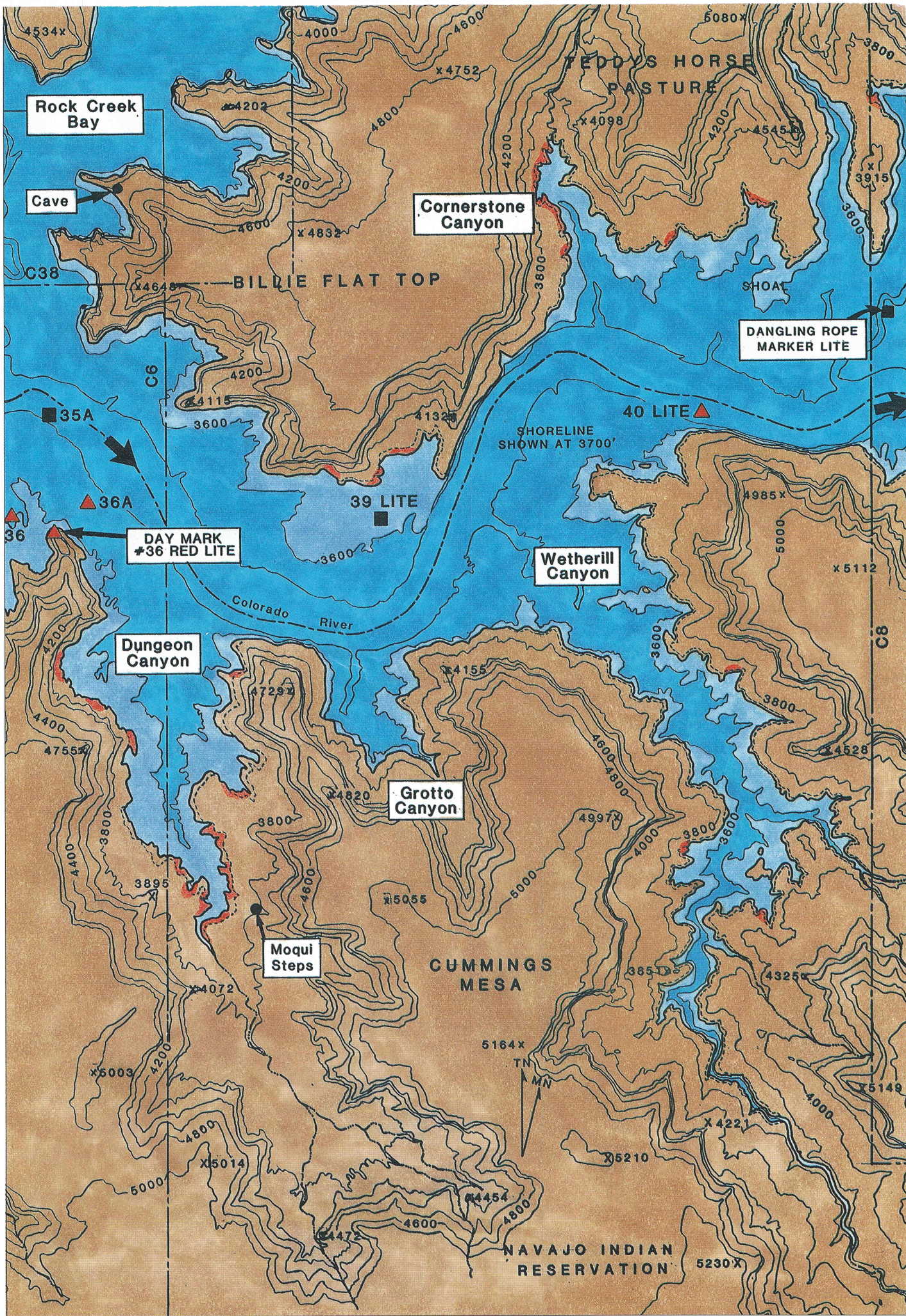
C-5

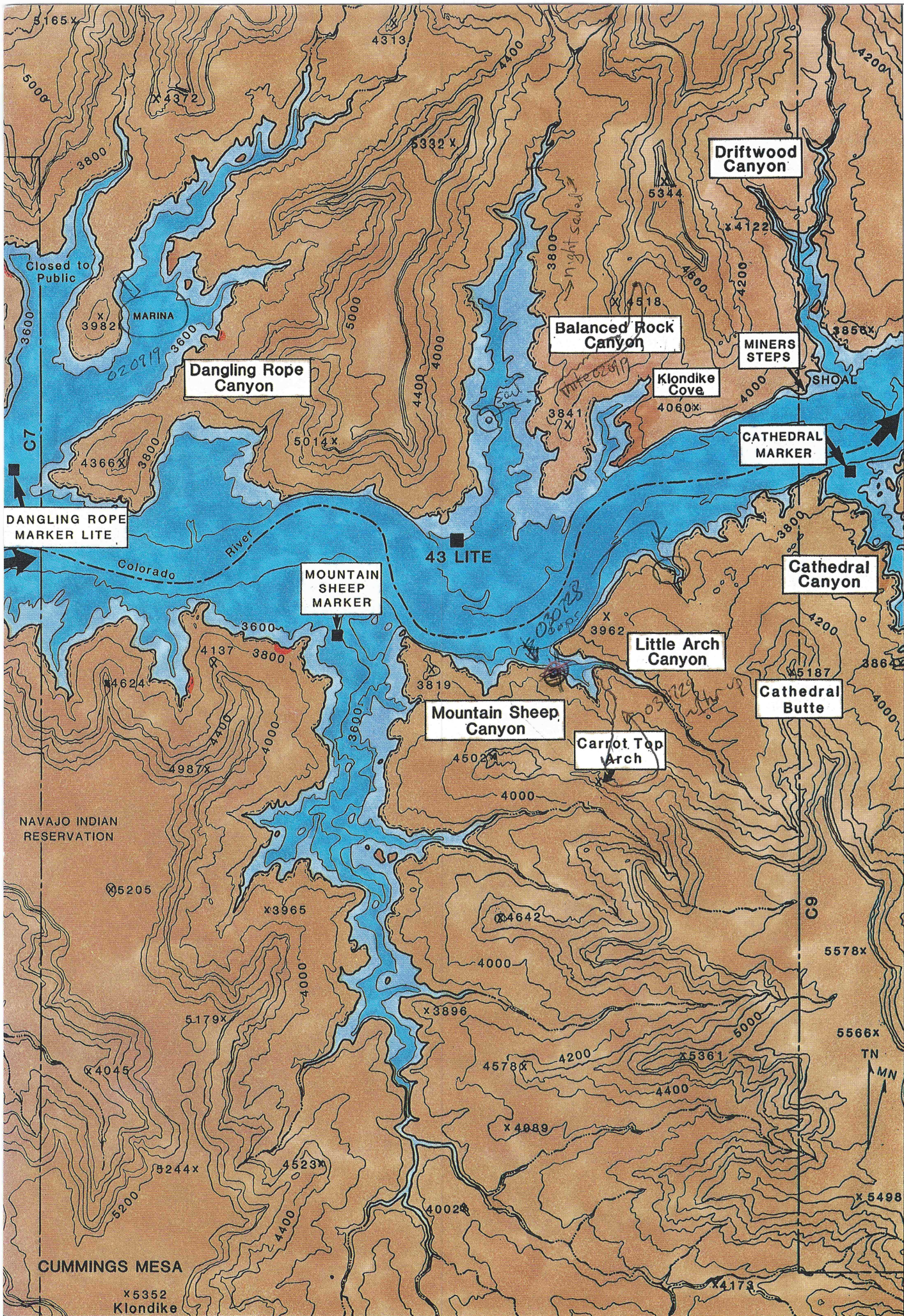


Junch on nice river cobbles island 020919
3627, good fall ~ 3660'

C-6 Gregory Butte

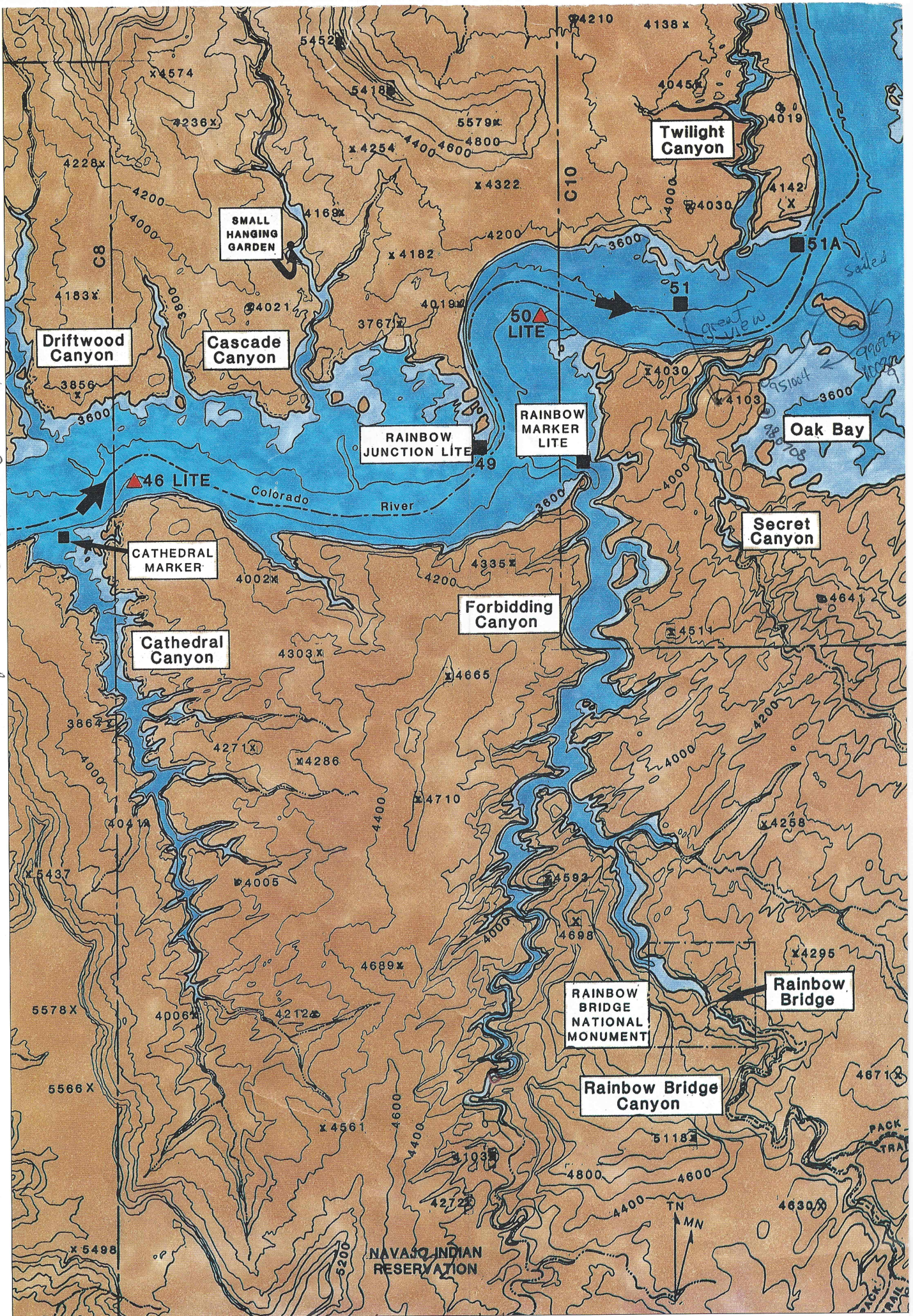






020918 -
+19
magnificent
+ 919 but cloud free
nice again

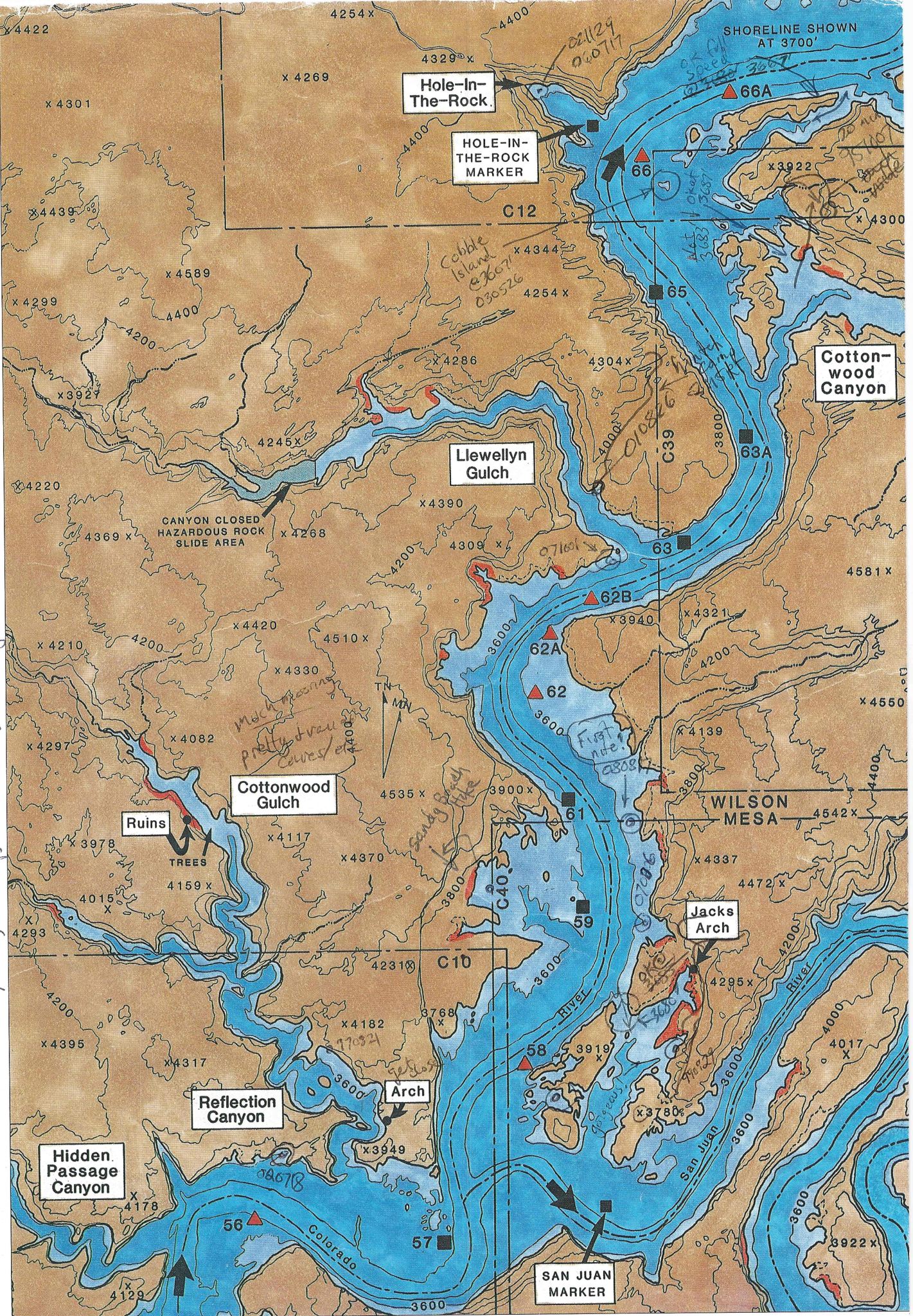
Secret Cyn - first visit 9/9/73 - awesome!
ski boat ride, plus hike looks cool!

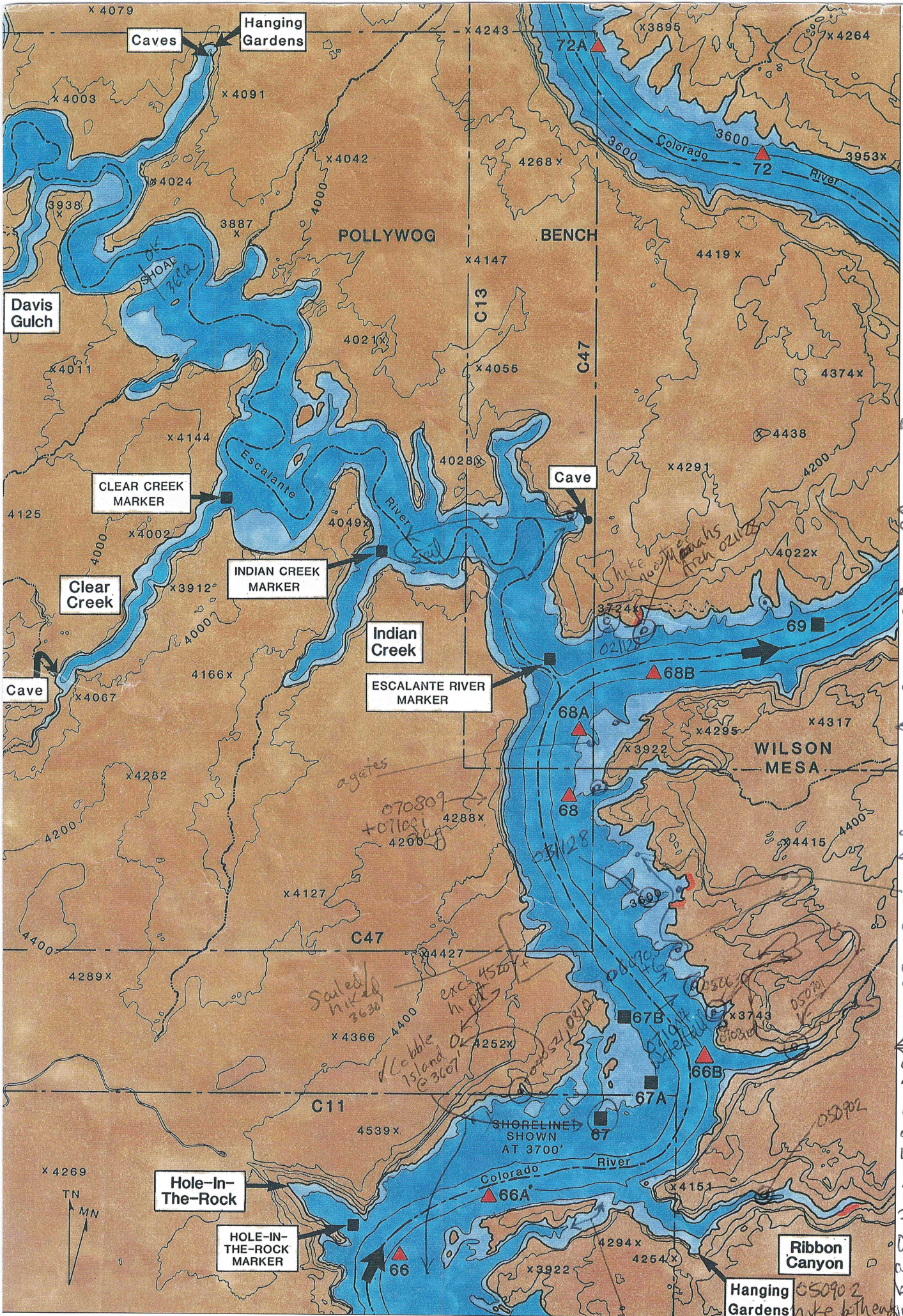


hiked 02/13/00-0017-0722 down 0758-0833

060727.0720-1145 HIR → Jacksons

070307-Tue-Sandy Beach hike 5260/foot, 1hr up, 0850-0950s bakery GPS 4432 Δ 800





030727
@ arch
980709
080525
920526
920528
walking rock (on shelf)
930917
020917
Twin eden Cyn
0718,
1020-
1345
03:25
RT
2cyns
021124
agary
both
150-185

C-12 The Escalante



OK Full speed
1 MILE
hike across?
050902
hike both